

Basic Compositional Techniques

- **Composition:** Arrangement of objects or art elements on a picture plane.
- **Picture Plane:** The surface you are working on



Bill Richards Graphite Drawing

Art Elements: The Building blocks of art

- Line
- Shape
- Form
- Texture
- Space
- Value
- Color

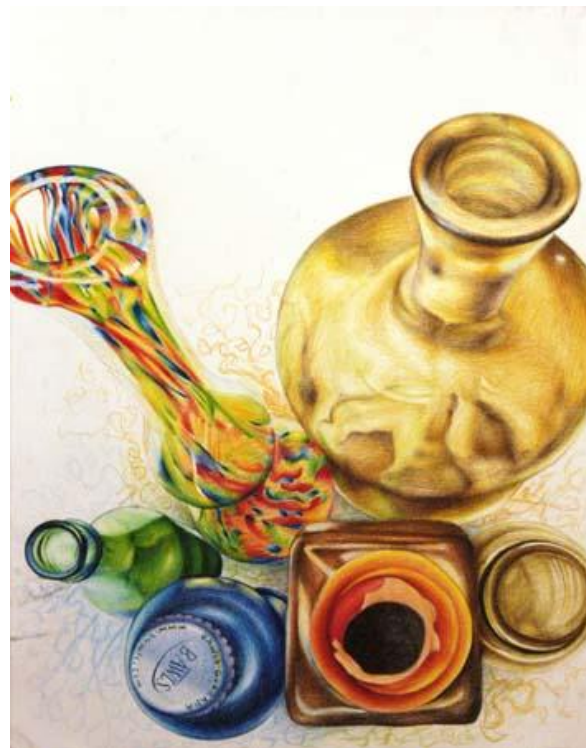
- **Unity:** Elements working together to create harmony and cohesiveness in a work of art.



Landscape Variations I
gold point and silverpoint
6.75" x 10"
DAVID LADMORE

Movement/Leading Lines

- The way art elements are arranged that draws the eye throughout around a work of art



William Blake *Whirlwind of Lovers* (Illustration to *Dante's Inferno*)
Birmingham Art Gallery



Balance

- Arranging elements so that no one part of a work overpowers or seems heavier than another part

Asymmetrical

Cannot be divided into equal parts.
Having different designs on both sides of a central axis line.



The Great Red Dragon and the Woman Clothed in Sun
c. 1806-1809
Watercolor
34.3 x 42 cm
Brooklyn Museum, New York



Symmetrical: Can be divided by a central axis into equal parts. Having the same design on both sides of a central axis line

Emphasis

area of importance or visual
dominance. The most important part of
work is called the **focal point** and has
most emphasis



Goya *The Third of May*

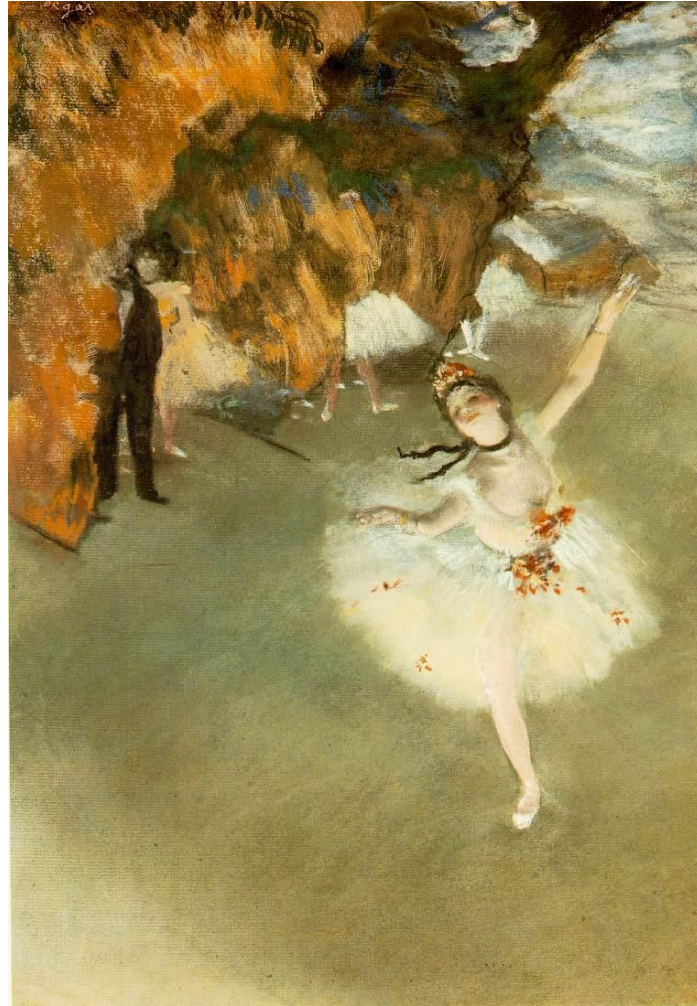
Ways to create emphasis

- Contrast
- Placement of objects
- Others?????

Degas *The Star*

What is the focal point?

How did the artist achieve this?

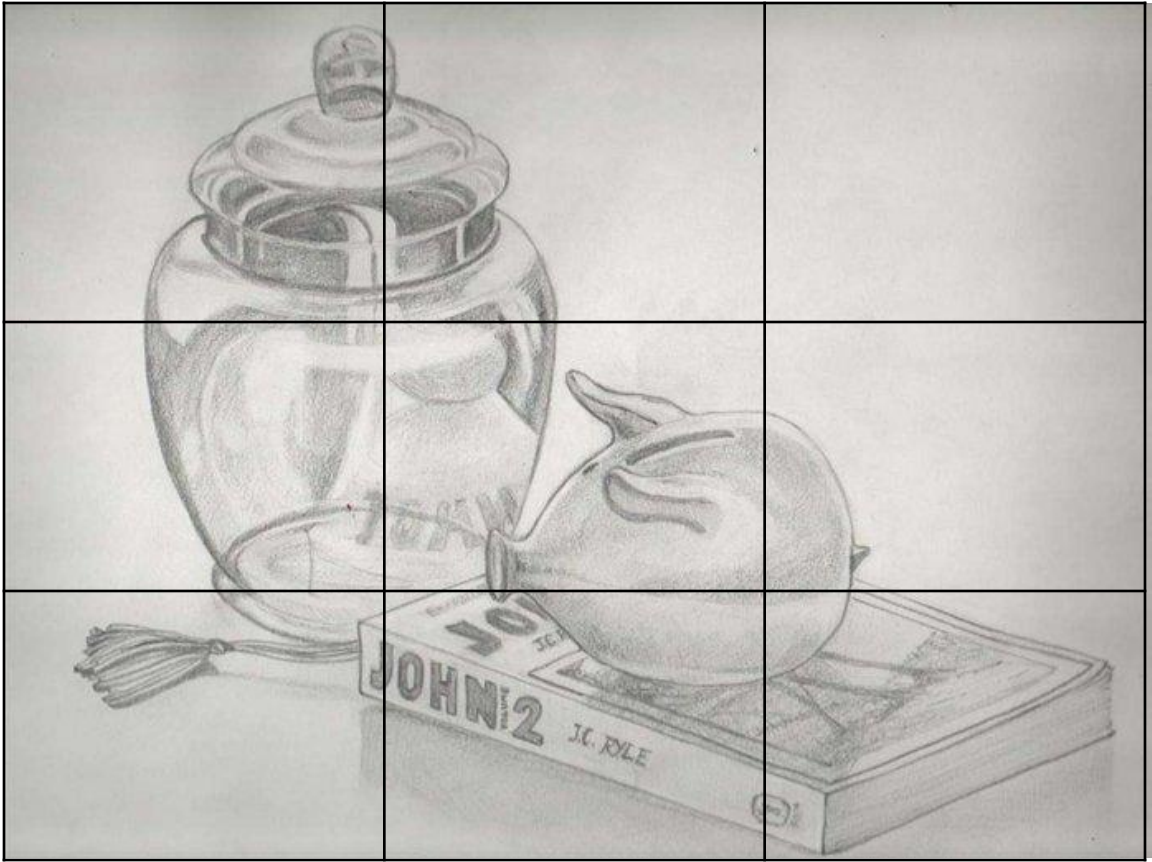


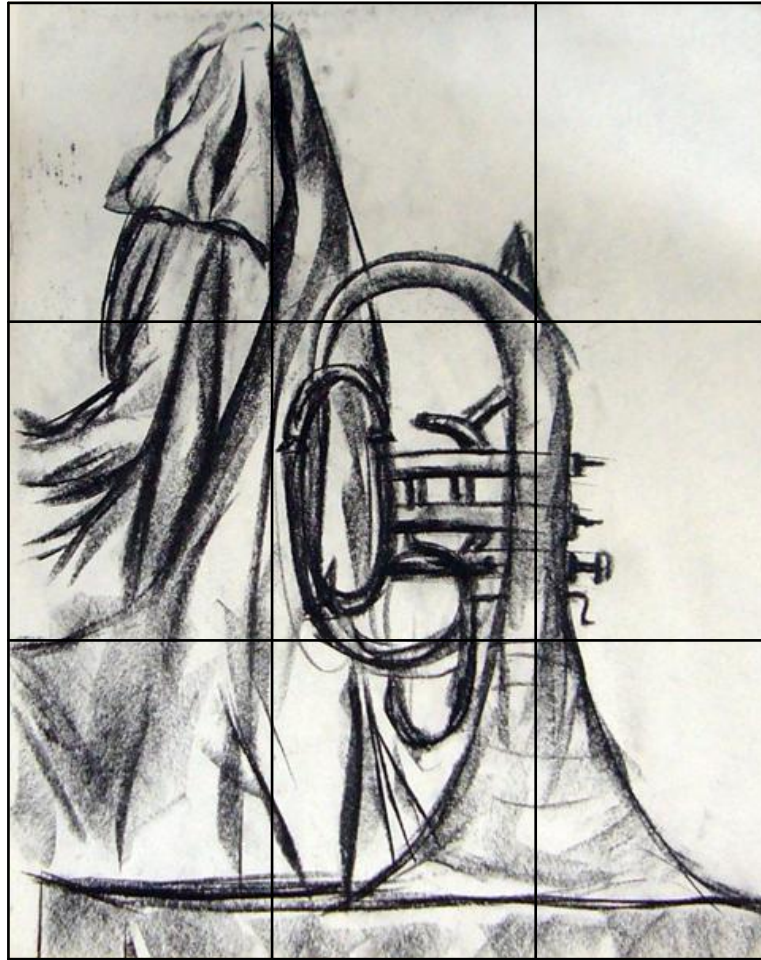
Contrast: The difference between two things



Rule of thirds

- Divides a rectangular shape into thirds.
- A fail safe division of space to help make a composition visually appealing. Focal points are usually placed at the intersection points
- Helps keep the subject from being placed in the center of the page





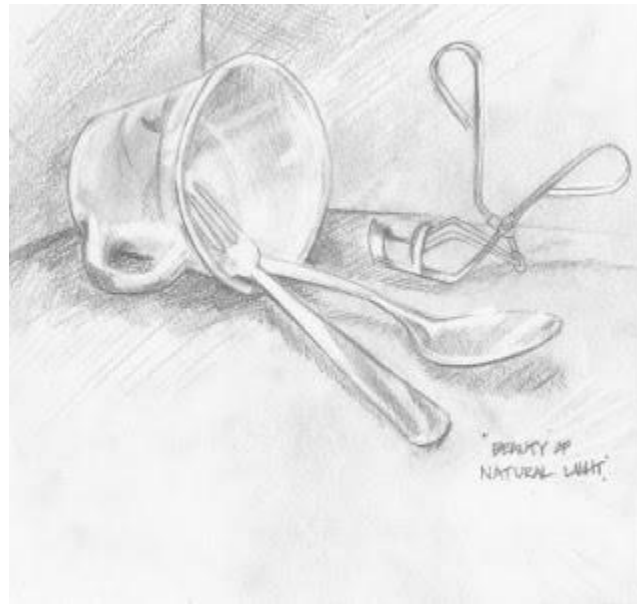
Rule of Odds

- Using odd numbers of subjects or objects in a composition are usually more interesting





Closed composition: One large space around the still life or subjects.

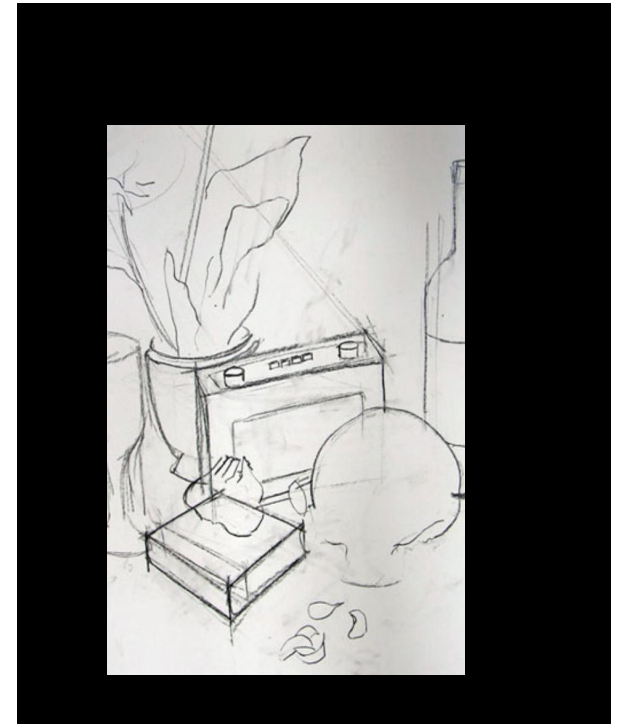


Positive and Negative space

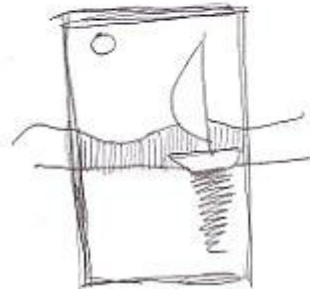
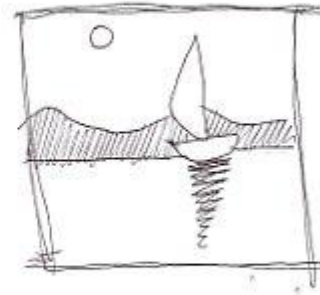
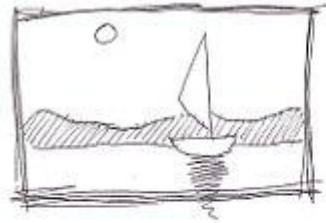
Open Composition: The composition runs off the page breaking up the negative space.



Cropping: Zooming in. Makes an open composition



Thumbnail Sketch: Quick planning sketch that is small!!!



Fist/ Compositional Sketch: Quick planning sketch that is bigger than thumbnail sketch!!!



RULES OF DESIGN

- Make a thumbnail sketch
- Make a Compositional Sketch
- Block it in- VERY LIGHTLY
- Contour Line It!
 - AGAIN VERY VERY VERY Lightly

Assignment

Please watch Mrs. Campos for demo!

Thumbnails, Comp and Final -Plan before!

Crop it- Open Composition

Rule of odds

Rule of thirds

Choose one of your liking: Movement, Unity, Balance
(asymmetrical or symmetrical, Emphasis or contrast.