

Menu

Semester Long Project

During your free time you will be working on your semester long project.

After you do a project you will always have something to do because you will be working on your Semester Long Project. Some days I will just have you work on this assignment.

Your Semester Long Project is worth 400 points all together.

What I am Expecting

Quality more than Quantity.

You will have a menu. Take out the menu and work on a section of the menu.

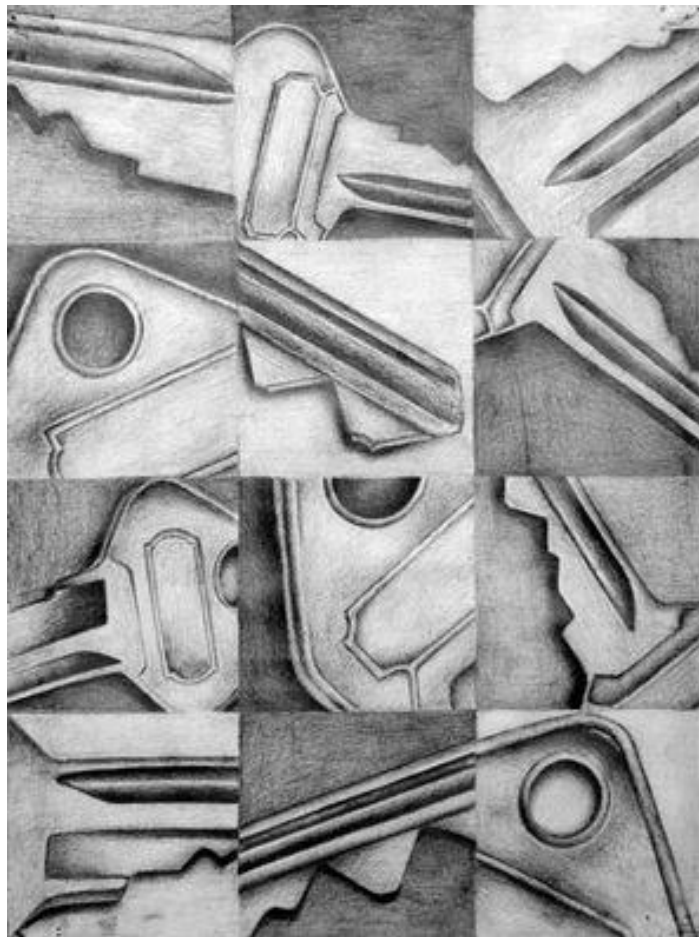
Three sections of the Menu

Starters- 20 minute drawings. They are similar to the starters (bell ringers) we do at the beginning of class. I expect a 20 minute drawing and nothing rushed.

Main Course

Choose only one! This should take a whole class period! So don't rush this... It will be graded for Quality, time put forth and directions followed

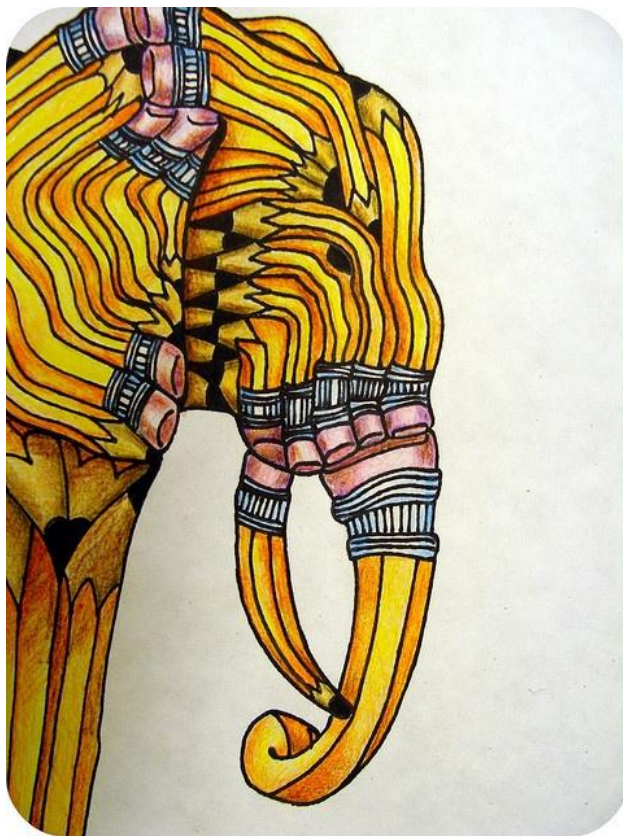
Choice 1



Choice 2

Collage. Make a collage on one part of your sketchbook then draw the collage on the other part of your sketchbook.

Choice Three



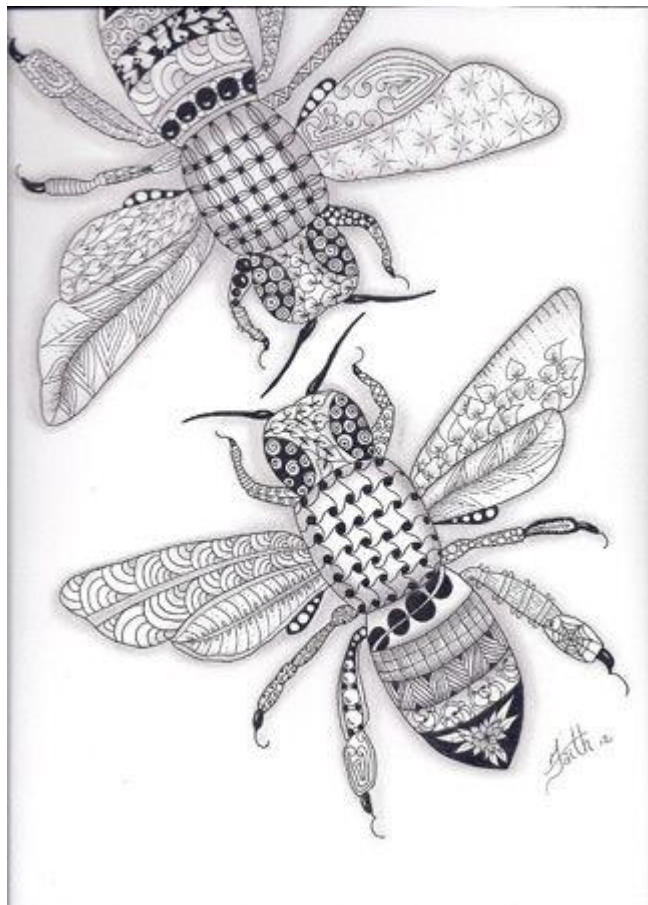
Desserts

1 hour drawings (at least)

Half Face Half Drawing



Zentangle



Checkpoints

We will have checkpoints every two weeks to see progression. Due soon is your starters