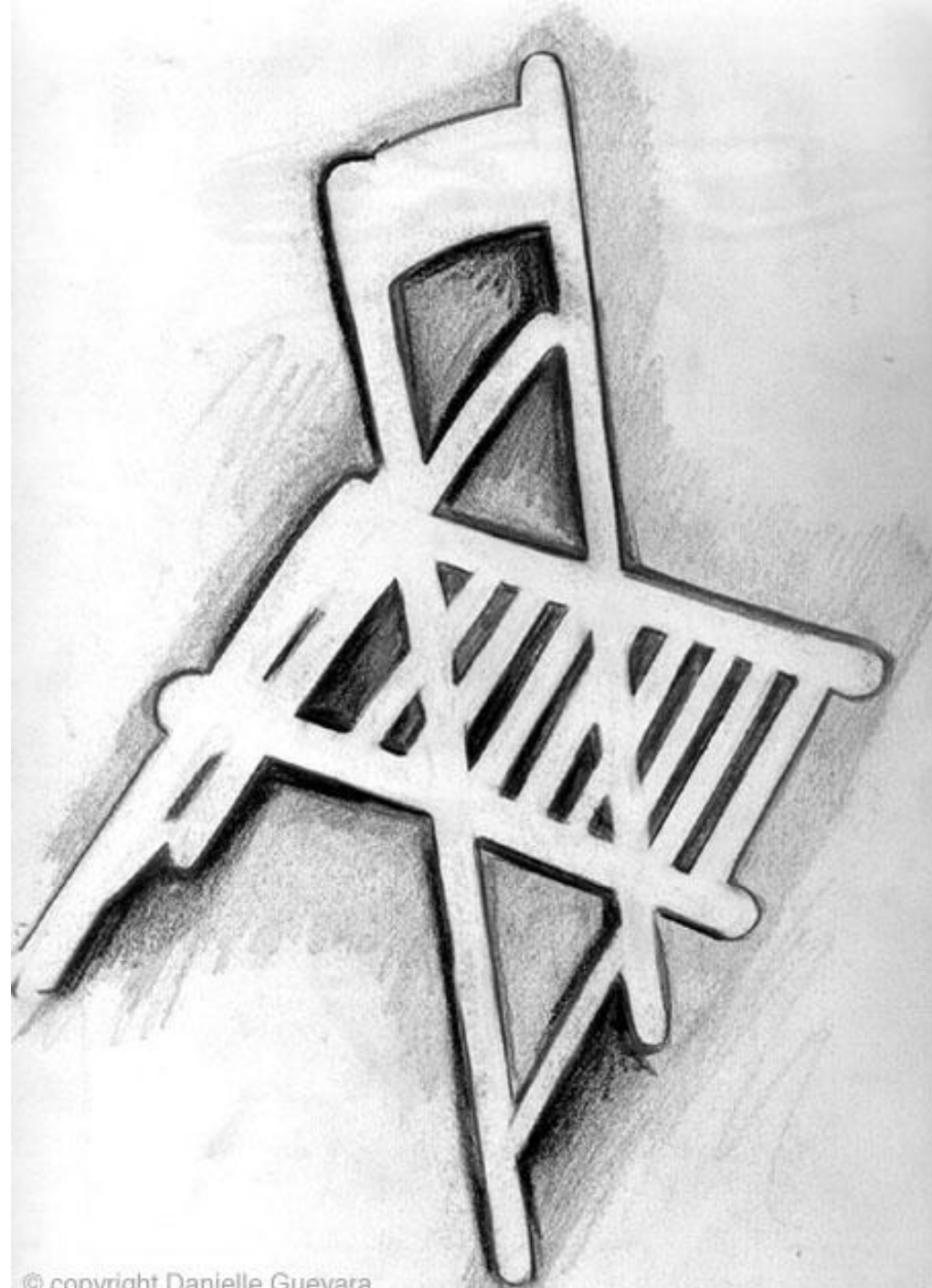


# Negative Space

# What is Negative Space?

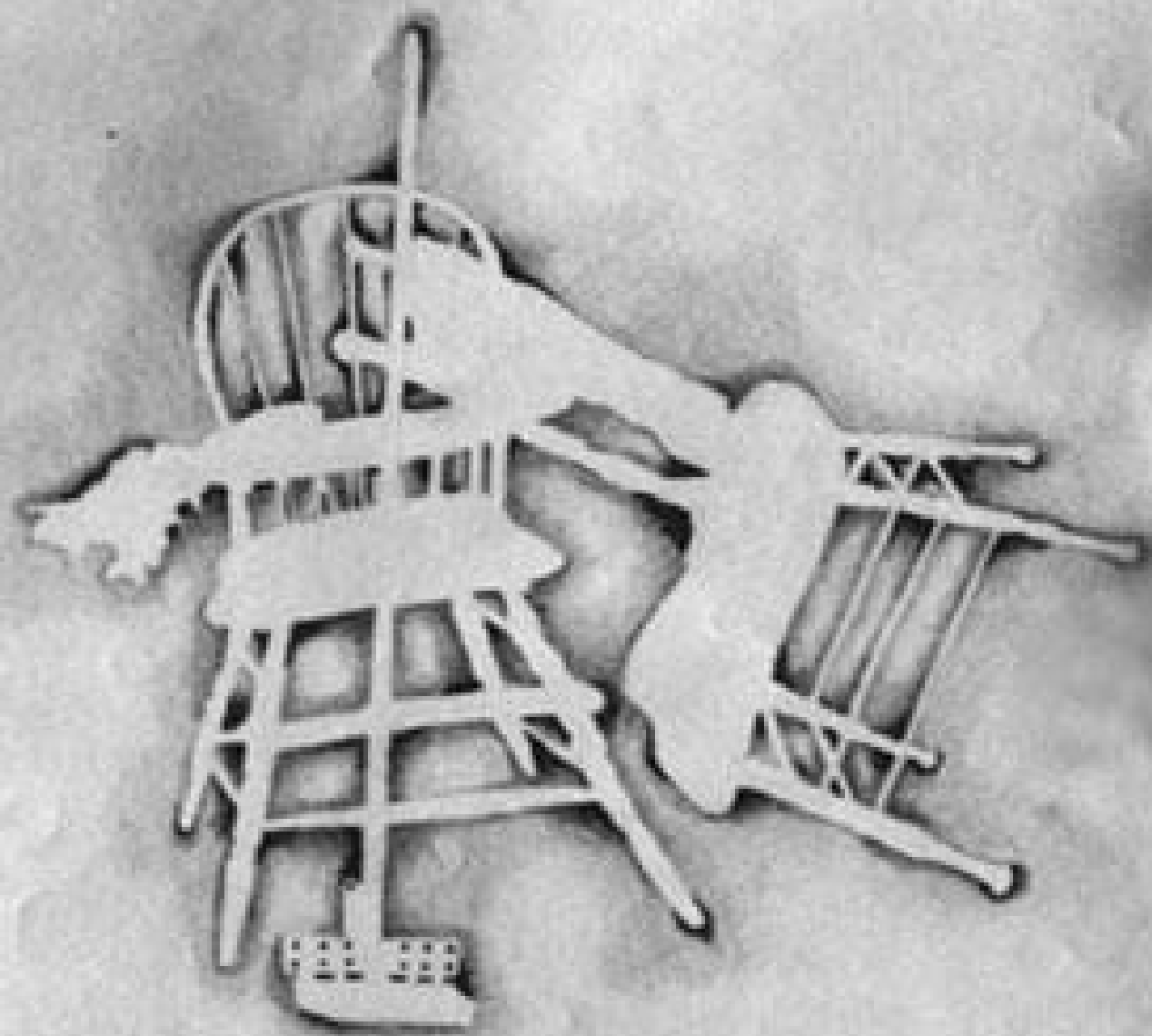
- The space that surrounds objects





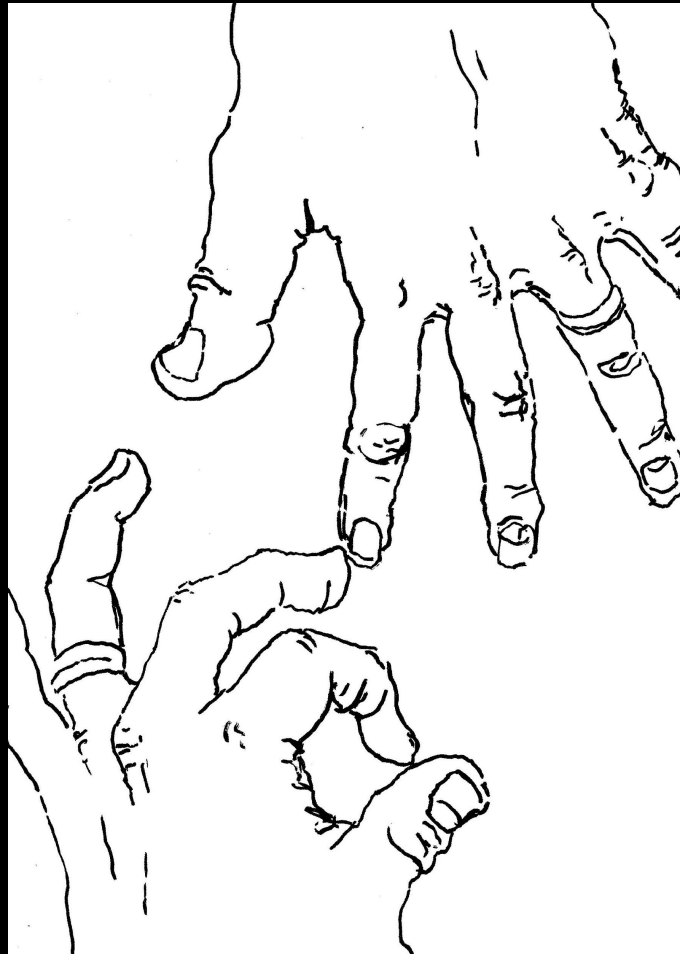
© copyright Danielle Guevara







# Contour Hand Drawing with Negative Space





What color is the negative space?



What color is the positive space?



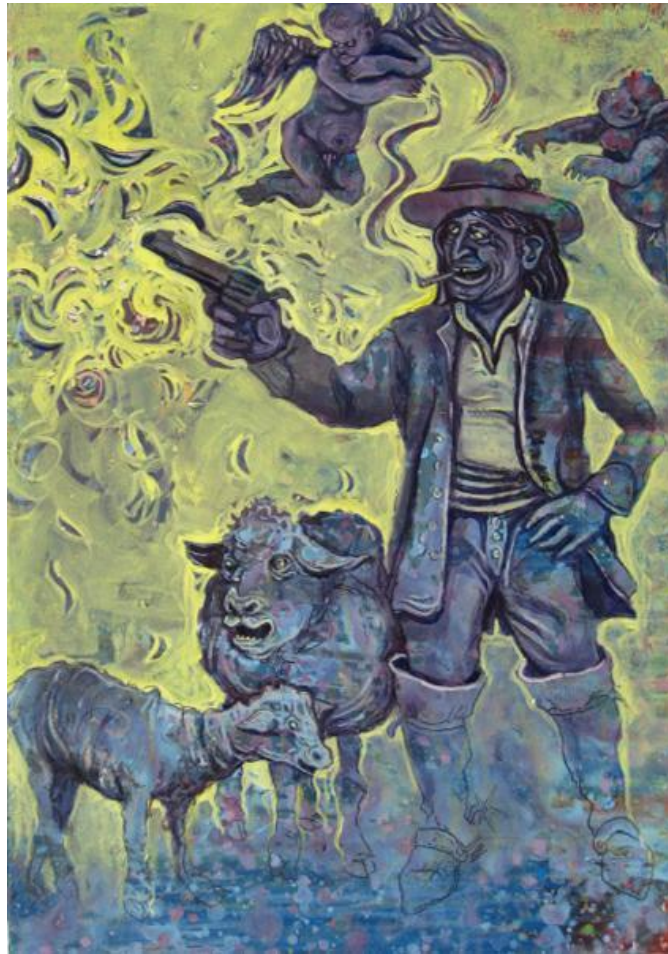
What color is the negative space?



What color is the positive space?



What color is the positive space?





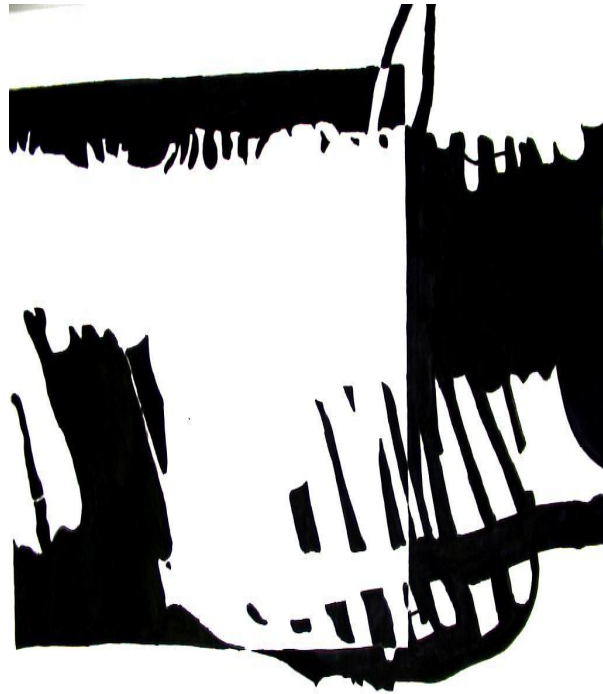
What color is the positive space?



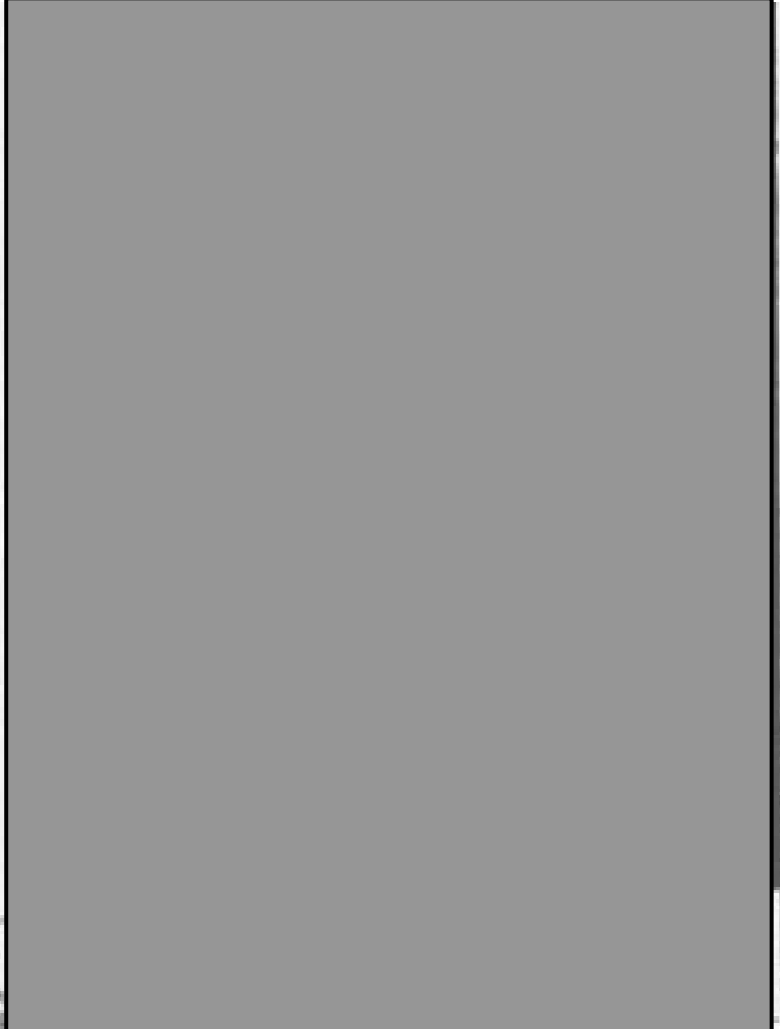
What color is the negative space?

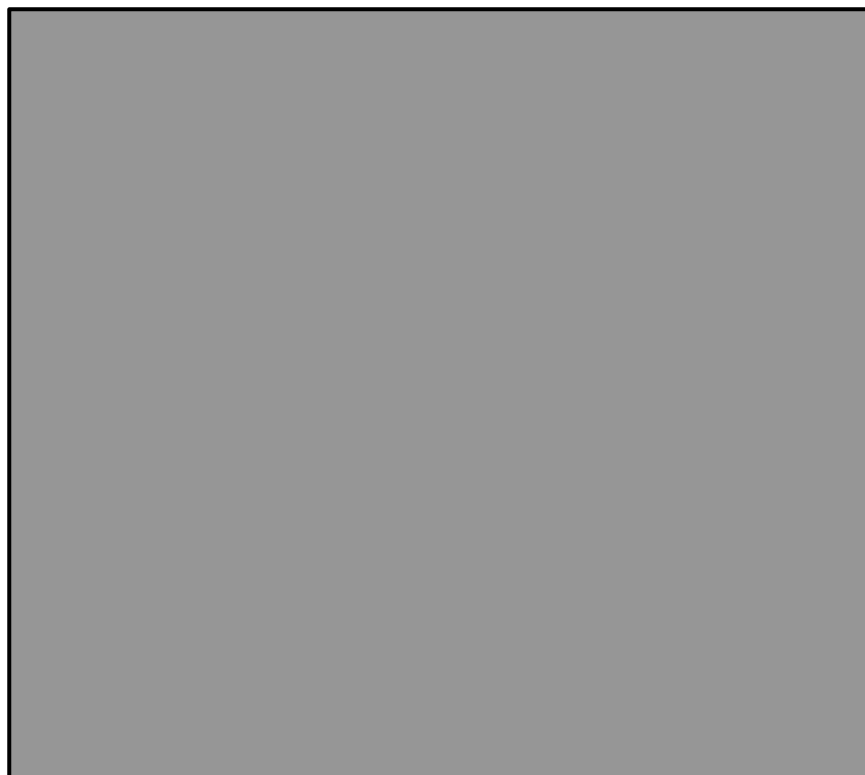


# Your Assignment

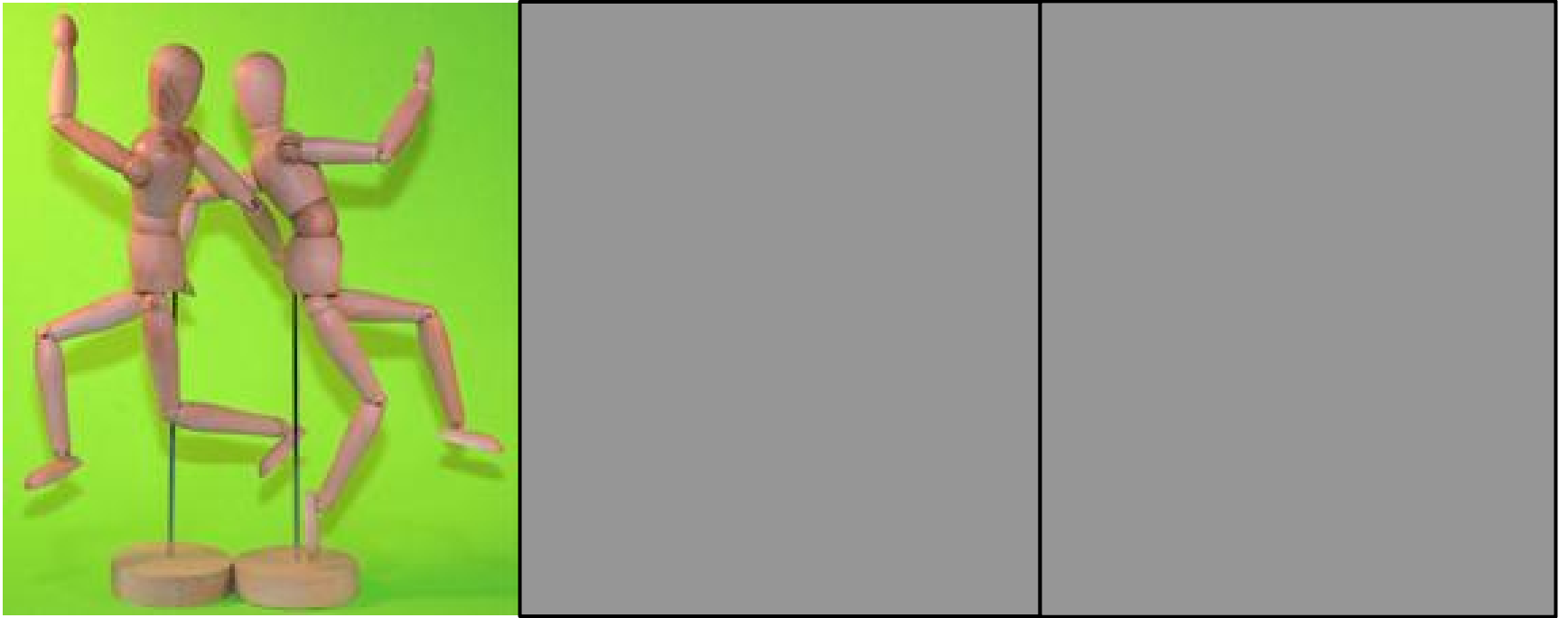








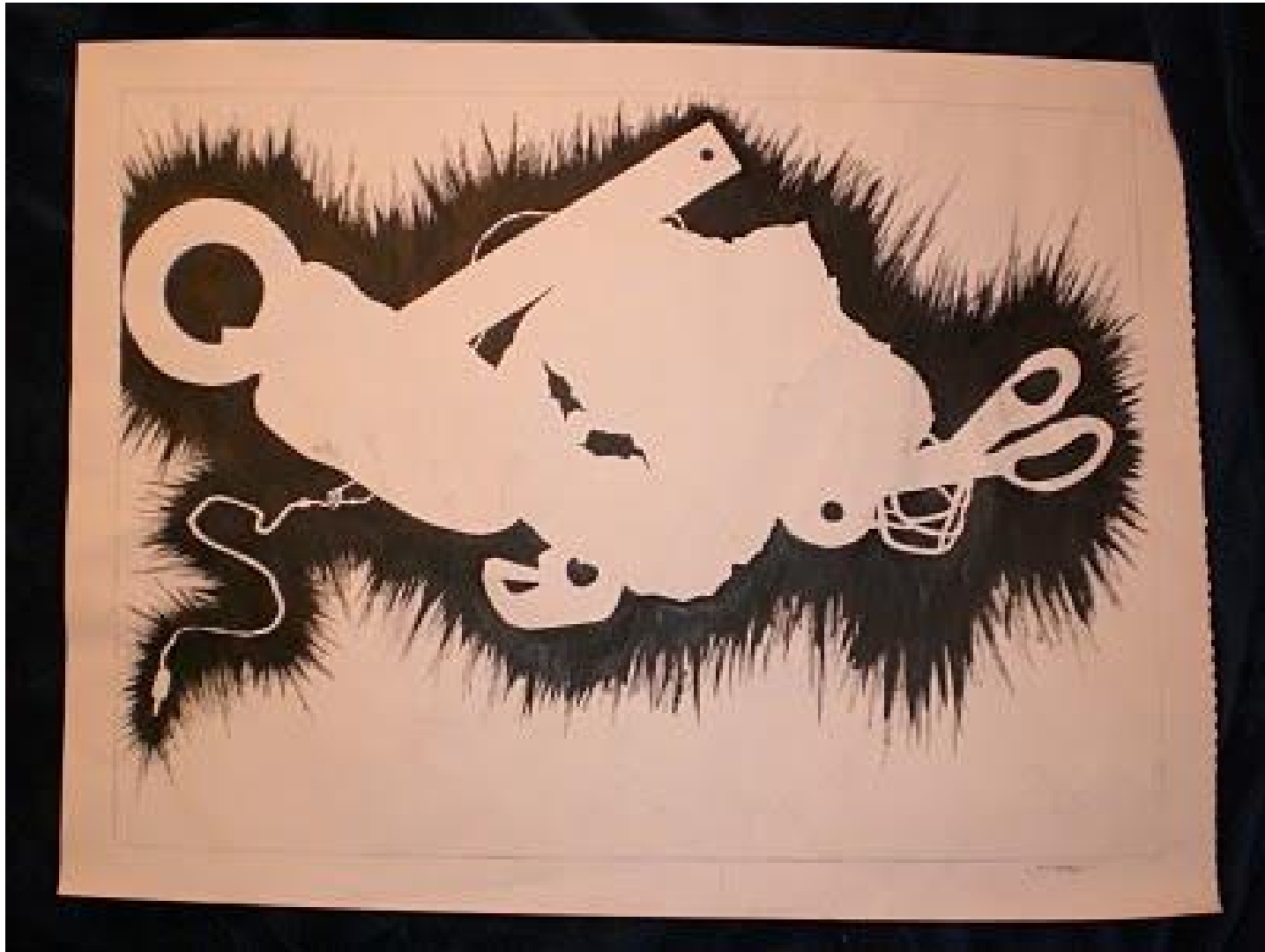
Lets see how to view this object- with its negative space...



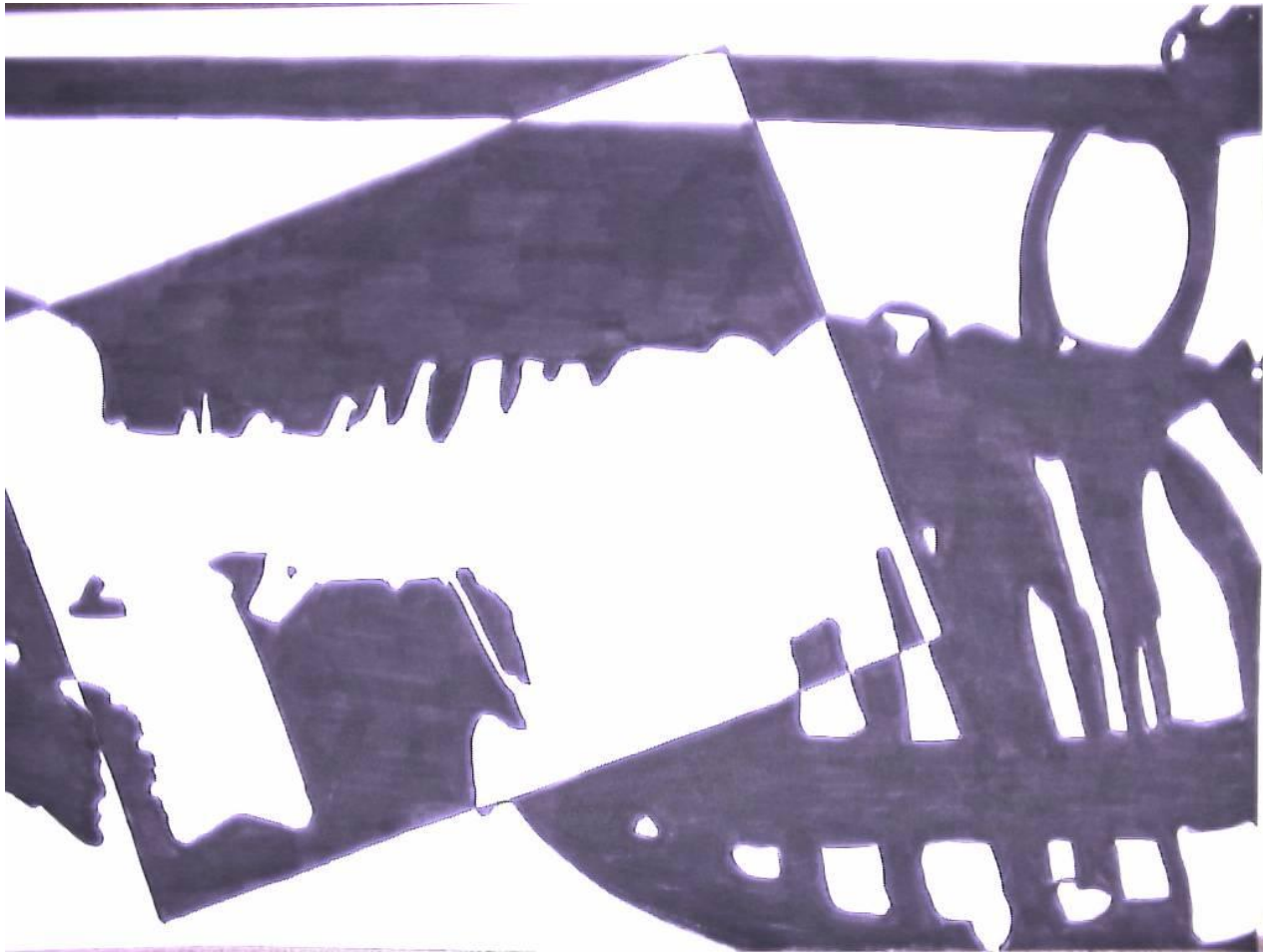
Lets critique it.....



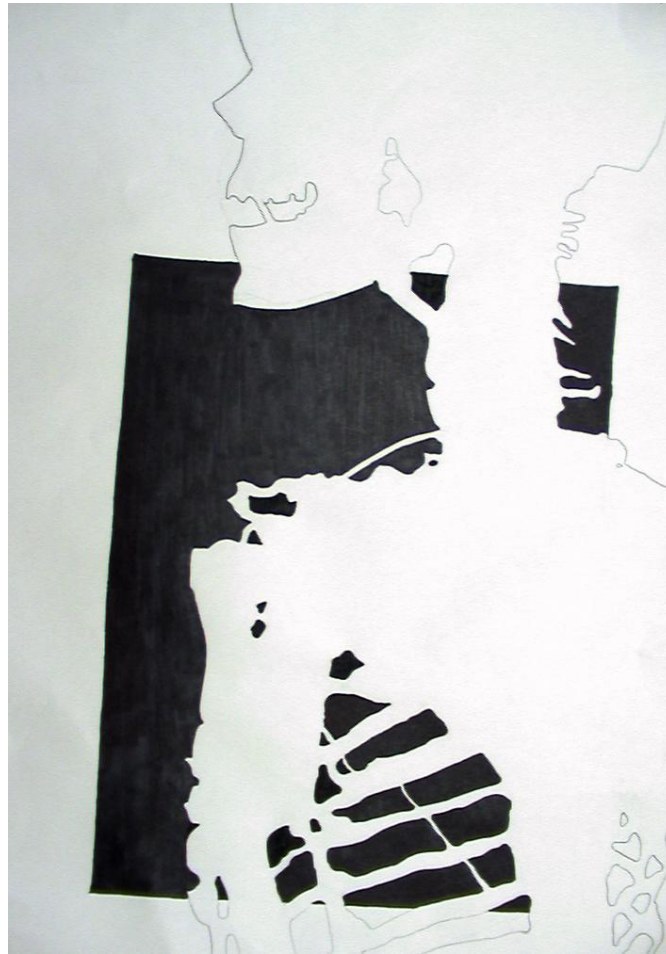
There should be no lines around the objects or in between them.  
You are drawing the **NEGATIVE SPACES** not the **OBJECT**  
(**POSITIVE SPACE**)



Draw a portion of the skeleton. The skeleton must fill the entire page and break the picture plane.



Draw the skeleton using what you know about contour line (no chicken scratching and no value, single descriptive lines). You will draw the **negative spaces**, not the positive ones.



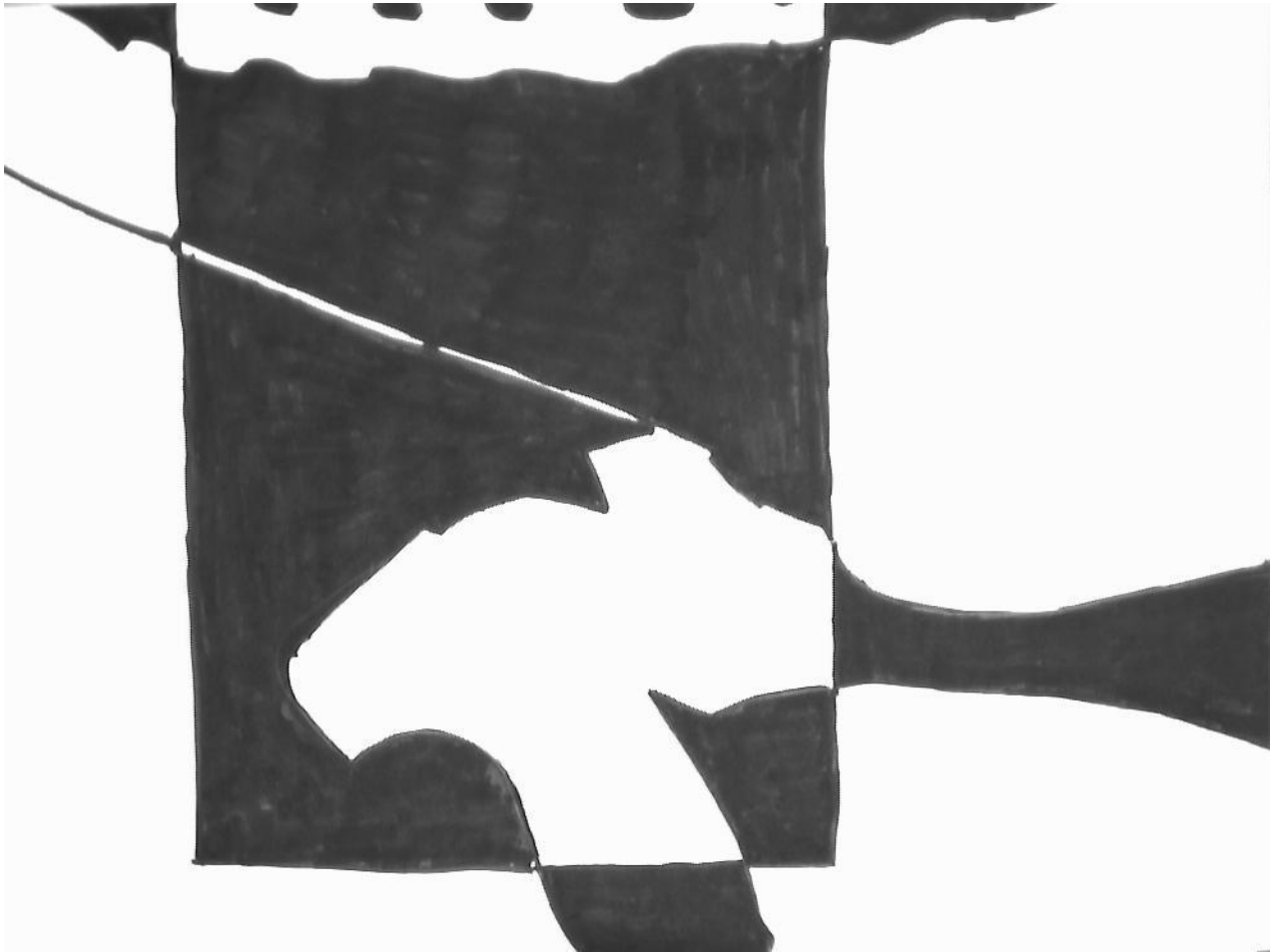


Once your drawing is complete you will crop your image using a window that you will borrow from me. You will try to break up the large negative spaces in to as many smaller more interesting and **dynamic** ones.





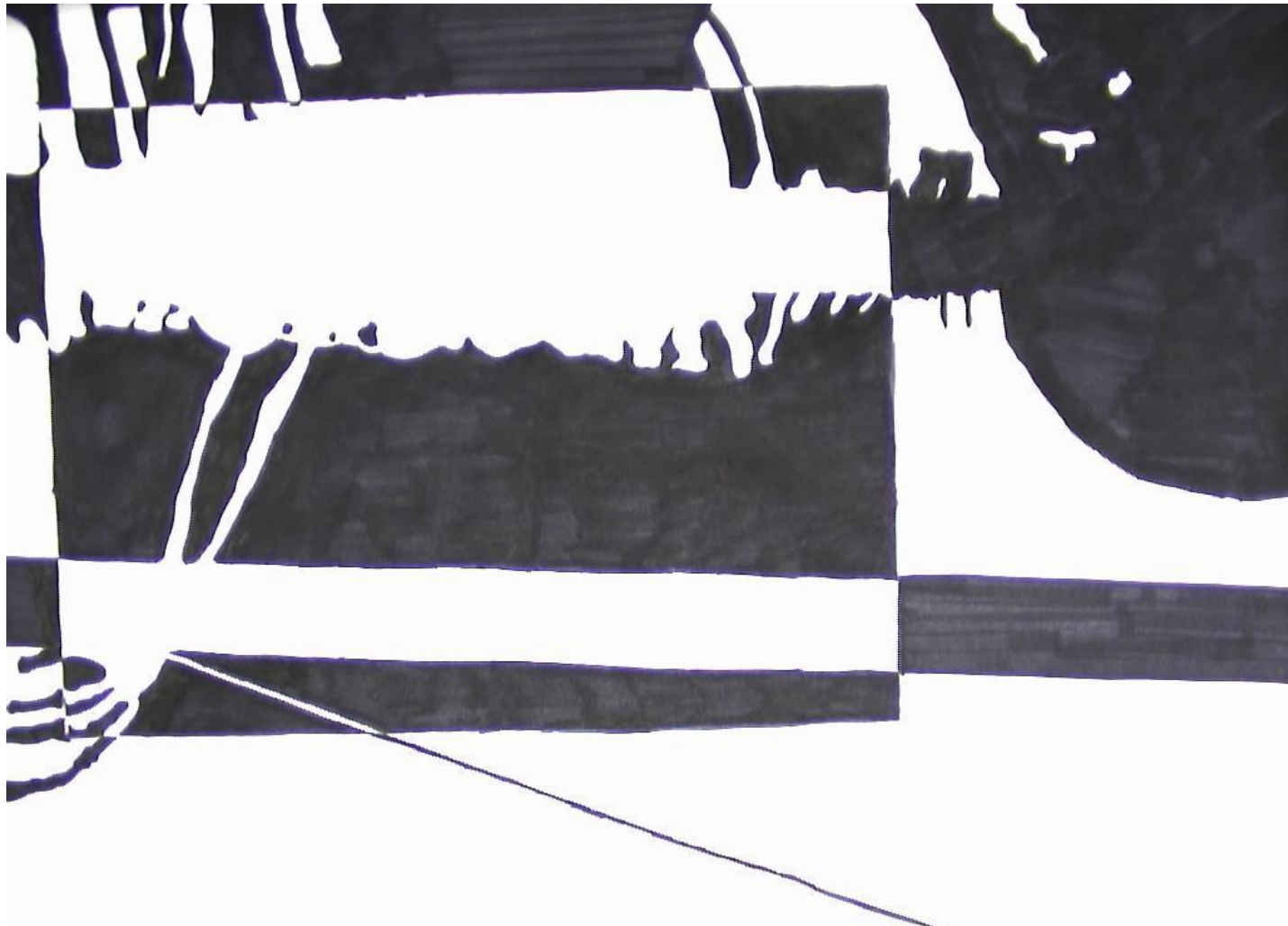
The negative space inside the cropped area will be black. The positive space out side the cropped area will be black.



Color neatly. ANY marks that you make will show. It works best to outline the space (to avoid rough edges) the color in the same direction up to the edge.



Put your name on the back of the drawing,  
in pencil and turn in with your rubric. The rubric  
should on the front.







# Things I don't want

I don't want the whole skeleton on the page- Just a portion of it

I don't want you to draw detail of objects- just the negative space

I want you to use contour lines and draw **LIGHTLY!**