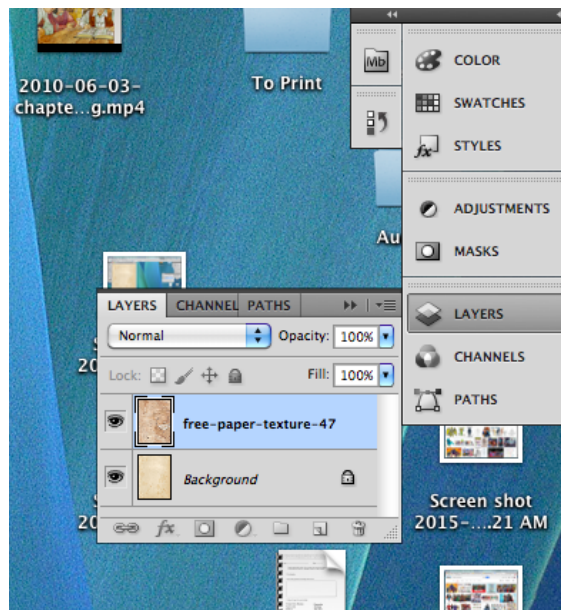
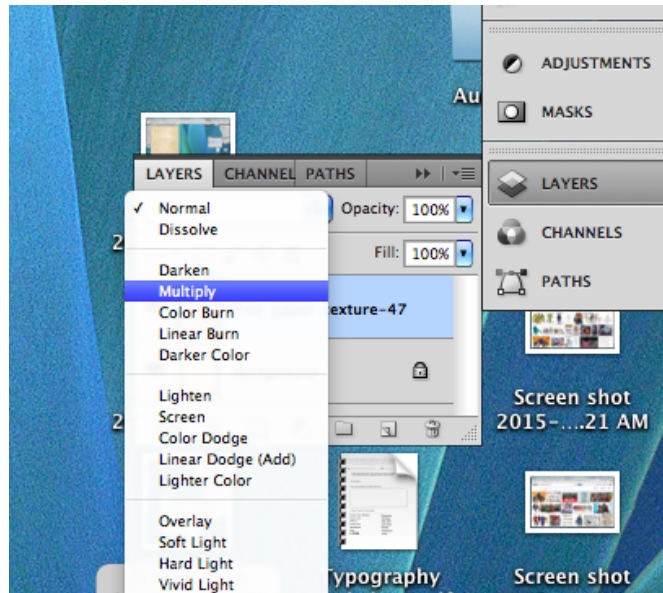


Photoshop Tutorial 1

1. Go to www.camposart.weebly.com
2. Click on the link Commercial art and go to PS 1 Files.
 - a. Click here <http://camposart.weebly.com/ps-1-files.html>
3. Download all the files on your desktop
 - a. Two paper backgrounds
 - b. One typewriter
 - c. One instruction
 - d. Film of lecture (will be put on website later)
4. Open Photoshop
5. Go to file > open > free-paper-texture-10.jpg
6. Drag the other paper, free-paper-texture-49.jpg, on to photoshop
 - a. Open the layers button- you should see that there are two layers. One layer that says "Background" and the other that says "free-paper-texture-47"
Background should be on the bottom




7. Make sure the top layer is selected. It should be blue. Then go click on the button to the top left that says “normal” scroll down until you see the word multiply. This will combine the two layers together.



8. Then open another photoshop screen by going to file> open> Underwood_Typewriter etc.

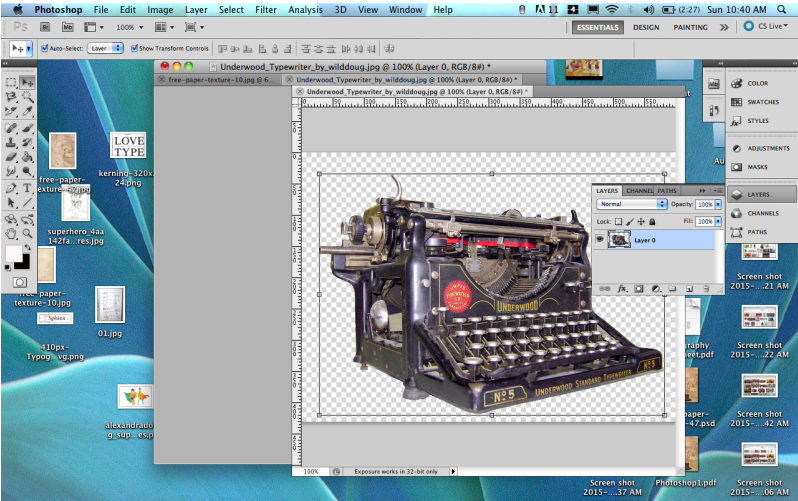
9. Double click on the lock symbol in the layers section- this will unlock the layer

10. Select the magic wand tool and click on the white background.  This will be in the toolbar

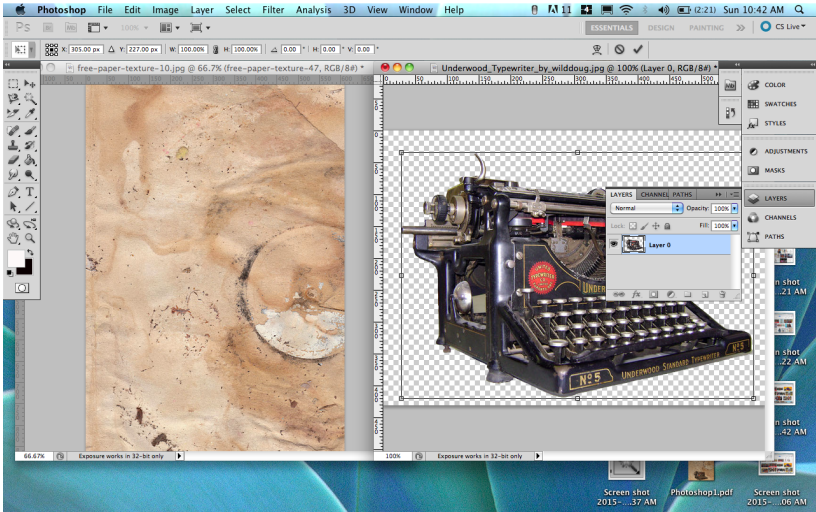
11. Push “Delete” and the white around the typewriter should go away. Then push “command/ windows D” to deselect the selected portion.



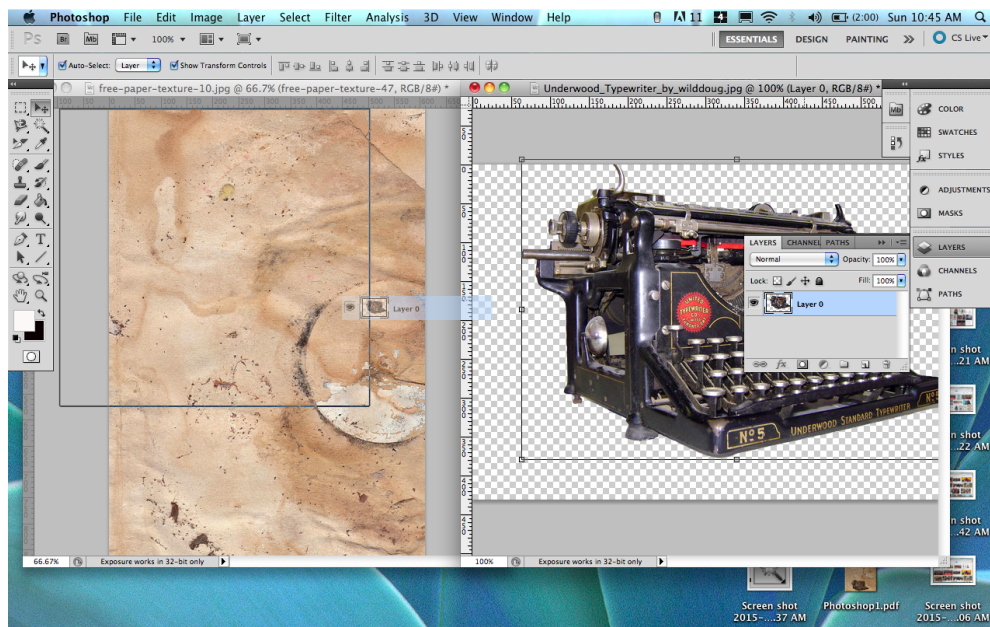
12. This part is a little tricky. Take the title bar and separate the two screens.



13. Now you have screens.



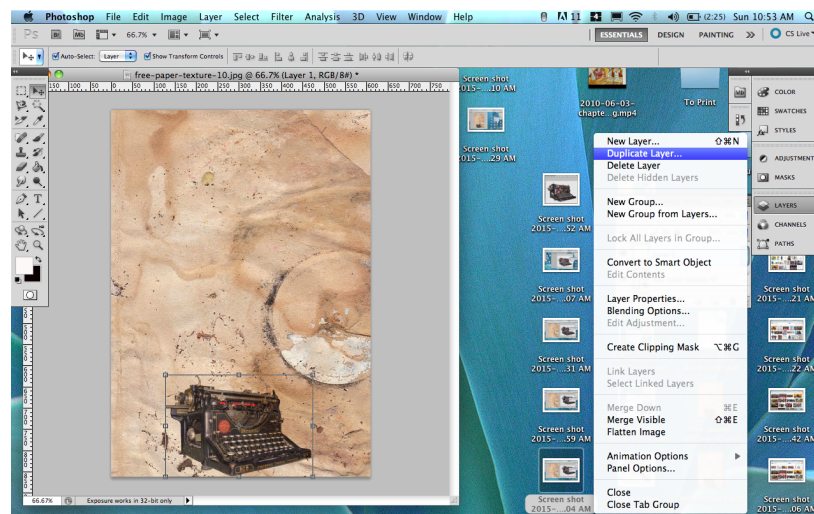
14. Next click on layer section with the typewriter. Drag it on the paper screen.



15. Now change the typewriter to make it smaller. Go to the arrow key and a sign will come up asking if you want to transform this image. Push ok or yes. If you make a mistake or want to make it smaller, just push "command/windows T" for the transformation tool.

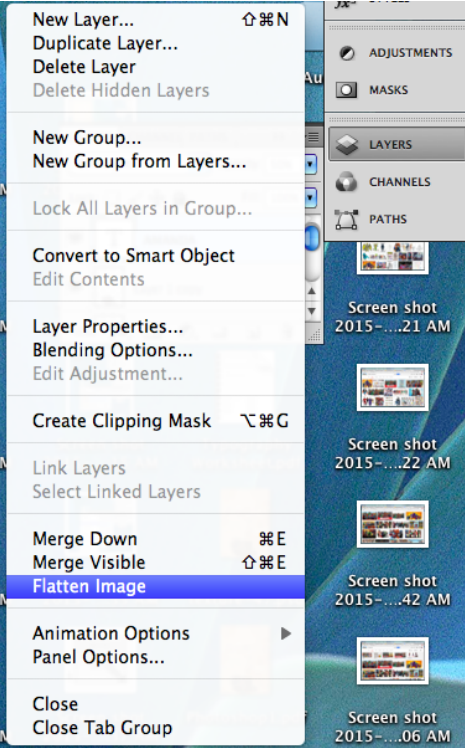
16. Set the typewriter to multiply and opacity to 90%

17. Now, duplicate the "Typewriter" layer and set it to Soft Light and Opacity of 30%.



18. Next you need to create some text. The font I used is Arial BOLD. Just write your name with white and also make it all caps, then transform the text as you wish. Also, set the layer to Soft Light and Opacity to 50%. Use the text tool in the toolbar. This should give you a new layer. After you are done flatten the image.

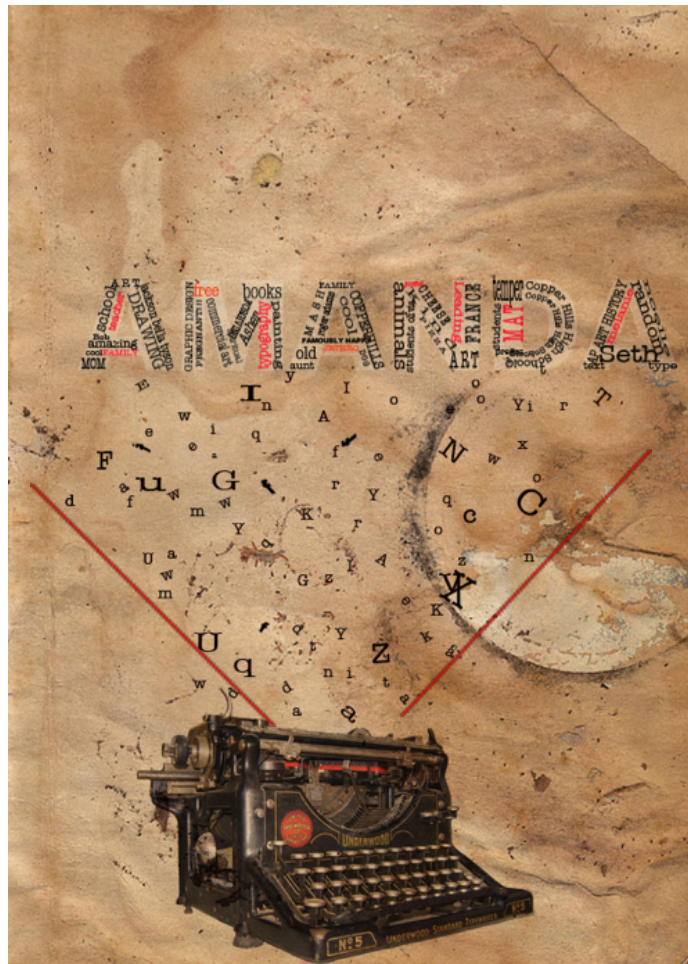
T.



19. The next step is the hardest or maybe I should say it takes a lot of time to get this to look just right. You will have to write a lot of words and move each word into each letter of the word. You are free to position and transform the words as you wish. Also, the font used here is called American Typewriter and I moved all the words into a folder called Name. I went to menu in the layers panel and scrolled down to "New Group". As you can see, I have colored some of the letters with red. Also, to give a greater impact to the effect, if you look in the lower side of the letters, they seem to be falling down. This adds more movement to the composition.



20. Now you need to add some more text. This time you will make it look like it jumps right out from the typewriter. Don't create full words, but only letters. For example, I start with the letter "a", and duplicated it a couple of times, then transformed each until it fit right. Next, I went to the next letter "b" and so forth. In the end move all the letters to a folder called "Text." The red lines represent the area where you should place the letters for maximum impact, so it looks like the letters are jumping out of the machine. This unifies the typewriter image with the lettering in the sky.



21. You will need to repeat Step 20, but this time add less letters and make them smaller. Now, rasterize all of them , then go to Filter > Blur > Gaussian Blur and use a Radius of 1.0 pixels. This will give the illusion that the letters are further away.

Extra: If you are done early- it looks cool if you add some clouds in the background. Go to google and find some clouds that you like. After you are finished. Go ahead and work on your superhero project